

Connect at Calvary

April 2011



Maundy Thursday Worship Services

April 21st

12:00 Noon Worship Service

7:00 pm Worship Service

Good Friday Ecumenical Worship Service

April 22nd

12:00 Noon Worship Service at Calvary

Good Friday Tenebrae Worship Service

April 22nd

7:00 pm Worship Service

Easter Worship Services

Saturday – April 23rd

5:30 pm Worship Service

Sunday – April 24th

7:00 am Worship Service

8:15 am Worship Service

10:15 am Worship Service

Easter Breakfast

April 24th - 7:30 am – 10:45 am

Remember in Your Prayers..

Lyle & Frances Fischer

Ricky Wieczorek Jr.

Vivian Isane

Amy Einspahr

Rick Fierro

Gertie Woehl

Lillian Chell

Kari Trapp

Judy Lyon

Mary Swanson

Judd Reaney

Jon Dahlke

Russ

Walt & Enid Asheim

Erling Urdahl

Paul Baumberger

Daryl Pearson

Glenda Gruba

Seth Rose

All Military Men and Women



Perry Krush - President

Brent Gromer - Vice- President

Kathy Miller - Treasurer

Leanna Jenner - Secretary

John Duffield

Linda Iverson

Kendra Larson

Shad Storm

Terri Stuck

Baptisms...

K'leigh Marie Sherman daughter of Leigh Sherman & Kristyne Eid.

Zack Dadah, Sierra Dadah, Jersi Dadah

Sympathy ...

To Karla Krebsbach and family. Karla's father, Bruce Creamer, died on February 24th.

To Susan Braunstein and family. Susan's mother, Jeanette Braunstein, died on March 6th.

To Evelyn Graff and Kendra Larson and family. Evelyn's husband and Kendra's stepfather, Virgil Graff, died on March 9th.

To Violet Frease, Terry Frease and Sherry Dwyer and family. Their son and brother, Larry Frease, died on March 9th.

To Carol Anderson. Carol's son, Ronald, died on March 28th.

Calvary Lutheran Financial News As of February 28, 2011

| | |
|------------------------|------------|
| Year to date offerings | \$ 125,955 |
| Year to date expenses | \$ 153,721 |

February 2011

| | |
|------------|------------|
| Offering | \$ 67,693 |
| Expenses | \$ 77,846 |
| Difference | \$ -10,153 |

MIF Building Loan

| | |
|-----------------|-------------|
| Amount of Loan | \$3,300,000 |
| Balance of Loan | \$1,462,247 |

2007-2010 "From the Heart Capital Campaign"

| | |
|-------------------|--------------|
| Pledges | \$ 3,101,398 |
| Received to date | \$ 2,990,279 |
| Pledges remaining | \$ 111,119 |

Lenten Services

April 6th

12:00 Noon Worship Service
Faith Talk - Ken Schroeder
Noon Soup - Pam Asbridge
Bread- Janet McCaskey
Bars/Cookies - Phyllis Newland
6:30 pm Worship Service
Faith Talk - Ken Schroeder

April 13th

12:00 Noon Worship Service
Faith Talk - Skip Rudge
Noon Soup - Charlene Keen
Bread - Enzie Jacobson
Bars/Cookies - Jodene Ehrich
6:30 pm Worship Service
Faith Talk - Skip Rudge

THANK YOU to the 31 people who donated blood at Calvary's blood drive on March 7th. Your donation was appreciated. Our next blood drive will be Monday, August 8th.

Bill Schmagel
Blood Drive Coordinator

Stories & More



for preschoolers & parents

APRIL DATES FOR

"Stories & More"...

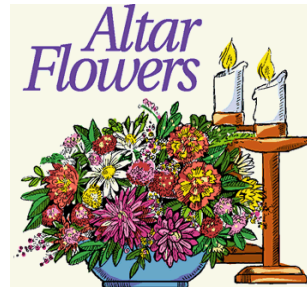
Sunday, April 3 - 9:15 am

Sunday, April 17 - 9:15 am

New families are always welcome!
Even if you have not attended a class this year, you are invited to join us anytime!

Congregational

Potluck...Saturday, April 9th after the 5:30 Worship Service. Bring a food item to share. **All are welcome!**



WE ARE MAKING A CHANGE For many years at Calvary, we have always used fresh flowers to remember or honor someone on a special occasion...birthday,

anniversary, baptism or some other important milestone. We are going to begin something different. We are going to use two bouquets of silk flowers on the Altar and change the bouquets each season.

The change.... When you want to honor or remember a special occasion for someone, you may make a donation of \$15.00 to one of the following areas....

- Pay for the cost of Baptismal items...Candle/Baptismal Certificates, Sponsor's Certificates or for the Baptismal Cloth
- Camp Scholarship for our youth to attend summer camp
- Replace the flowers in the Altar vases

You can always purchase fresh flowers and have them delivered to the Church. If you choose to do this, please let the Church Office know by Wednesday of the week you will be putting the flowers on the Altar. If you have questions, call Myron at the church office 342-9043.



will be meeting on Tuesday, April 19th, at 6:30 pm at Alternative Fuel - 620 Main Street.



Ladies...

Come, on **April 6th at 11:00 am** for our monthly fellowship and devotions. It's a lovely hour! We will be meeting in the Dakota Room for tea/coffee and a snack. **All women are invited to this time of fellowship and devotions.** If you have questions or would like more information, please call the church office at 342-9043.

CL³ICK

will be finishing up this year's activities on **Monday, April 18th . We will meet at 6:30 pm for a pizza party** (and take a moment to share your ideas for the program next year)! **Thank you, Youth, for a wonderful year!**



Middle School News

MILESTONE MINISTRIES will be celebrating with 3 year olds and their families on **April 6, 2011**. This month's focus is on the **"Meaning of Baptism"**. We will have reserved seating in the fellowship hall for dinner and in the sanctuary for the 6:30 service. Please call or email Kellie Meissner, Family Ministries Coordinator, with any questions: 430-9684 or kmeissner@rapidnet.com.



We will have lilies on the Altar this Easter. If you would like to purchase a lily in honor or memory of someone, the lilies can be purchased in the Church Office.

Each lily costs \$9.00. Deadline to purchase a lily is Sunday, April 17th.

USHER UPDATE...

The new Usher program at Calvary kicked off this month and is running very smoothly. We met, brainstormed, planned, and then trained 160 Ushers since the first of the year. The mission statement for the Usher group is, **"To create a comfortable, worshipful climate for those who come to experience God's presence and love"**.

The group of 160 Ushers is broken down into 11 teams, with 13 people per team. Each team has a Team Captain(s) to help guide and direct them through the process. Through our training sessions, we discussed the 8 Key Roles of an Usher at Calvary Lutheran Church.

The Roles are as follows...

1. Greeting & Welcoming People
2. Caring for the Hearing Devices
3. Being a Resource Group
4. Visitor Identification
5. Offering
6. Attendance
7. Communion Ushering
8. Pick up the Sanctuary

It is a blessing to see so many people that are excited about this new program and are readily embracing it. We do not see this as a task...we see it as an opportunity to serve God and to serve others. This is truly a ministry and an honor.

Next up...The New Communion Server Program

Tom Martin

LENTEN TAIZE SERVICE...Sunday, April 3rd, at 5:00 pm at Calvary. Make this service a special time for you and your family during Lent, a time to remember the suffering love of our Lord. Taize is a service of beautiful song, prayer and silence...a chance to rest in God's love. **Please bring a canned good which will be donated to Church Response. All are welcome!**



LADIES

It's Picnic Time!!!

Come for a buffet style get together of picnic treats.

- **Bring your favorite treat to share**
And enjoy some fellowship!

April 16, 2011 - 2:00 pm
Calvary Lutheran's
Fellowship Hall

Featuring
The Well-Done Players
of

The Black Hills Community Theatre

ALL Women are Welcome!!!

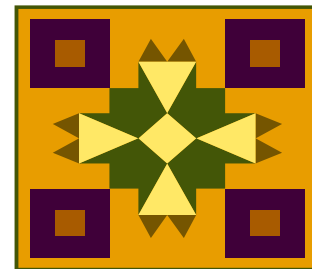
Recommended donation of \$3 and a canned good, all proceeds to be given to Feed South Dakota.

RSVP by April 9, 2011

To: Church Office 342-9043
or Yvonne Kuehn 718-9632

NEW MEMBERS... We will be receiving new members on **Tuesday, April 12th**. If you would like to join Calvary or would like more information, please call Myron at the Church Office 342-9043.

Calvary Quilters



will be having their annual quilt sale from **Thursday, April 7th through Wednesday, April 13th**. We have many new quilts. They make great Mother's Day, Graduation, Birthday or Wedding gifts or just to add to your home. Proceeds enable the quilters to make quilts for all new Habitat for Humanity homes. We also donate quilts to the Cornerstone Mission, Lutherans Outdoors, Lutheran World Relief and we are also able to buy quilting supplies. We **thank** all who have donated supplies to the Calvary Quilters. The quilts will be on display in the Sanctuary.



BEAR BUTTE CONFERENCE'S WOMEN OF THE ELCA EVENT...

This event will be held on **Saturday, April**

30th, 9:30 am at St. James Lutheran Church, 1100 Stanley Street, Belle Fourche, SD.

The theme: *Unity of The Spirit*

"Making every effort to maintain the unity of the Spirit in the bond of peace" Ephesians 4:3-6.

Registration, coffee, fellowship and displays are from 8:30 - 9:30 am. The cost is \$6.00

The Day's Program: South Dakota Literacy Council - Imagine not being able to read your Bible! Come and hear the story of a lady who is in her 90's, has tutored hundreds of students to read, and still tutors! Also, hear the story of a tutor and her adult reading student.

Questions?? Please contact Pastor Kirstin at 342-9043.



FAMILY MINISTRIES EASTER EVENT...

Family Ministries will host *"The Week that Led to Easter"* celebration on **April 17, 2011 from 3:00 - 4:00 pm at Calvary.**

Watch Easter come to life as your children make their Resurrection Eggs. Each of the colorful plastic eggs holds a different memory-grabbing object to take Jesus' journey to the cross and beyond, right into your child's heart. A sign up sheet will be provided at the Information Desk in order to ensure enough craft supplies for everyone. Please call Kellie Meissner, Family Ministries Coordinator, with any questions at 430-9684.

VOLUNTEERS are also **NEEDED** for this Easter Event on **April 17th, from 2:45 - 4:00 pm.** Volunteering for this event would consist of watching over tables and helping children fill their Resurrection Easter Eggs with the appropriate item, or reading the Easter Story or helping with the snack.

I am also looking for volunteers to make cookies or cupcakes for this event. Please call Kellie Meissner, Family Ministries Coordinator, with any questions at 430-9684.
Thank You!!



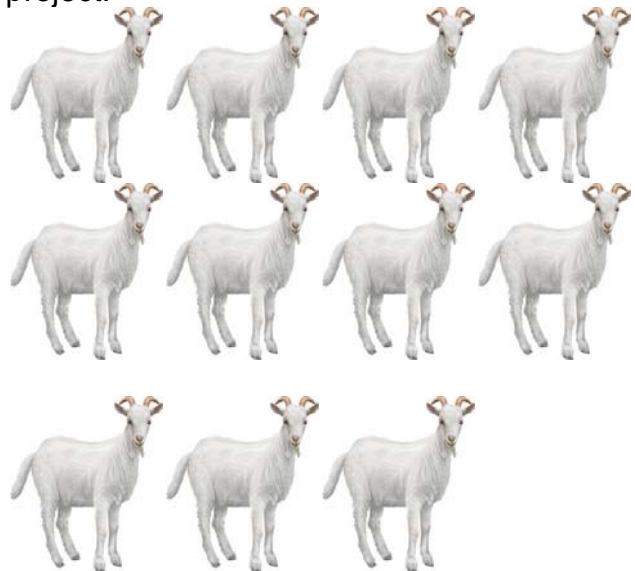
Easter Breakfast

Save the Date...

The High School Youth will be hosting the annual **Easter Breakfast on Easter morning (April 24th) from 7:30 am - 10:45 am.** We will be featuring delicious homemade Quiche, cinnamon and caramel rolls, assorted muffins, fruit platters, fruit cocktail and beverages. This is a wonderful event that takes place every year on Easter Sunday. Please make plans to bring your family and friends and join in this important meal ministry. There will be a free-will offering and all proceeds from the breakfast will help the High School Youth go on their Mission Trip to Las Vegas, Nevada in July. We will be taking 40 students and 8 adults on the trip.

OUR GOAT HERD.....

To date we have collected enough funds to purchase 11 goats. This mission project will continue through April 13. **Thanks to all** who have joined the children in supporting this project.





CALLING ALL HIGH SCHOOL SENIORS...

Calvary Lutheran Church will be holding a Senior Luncheon to honor all of our high school graduates on **Sunday, May 15th**. We will meet in the Fellowship Hall at 11:45 am for this special event. This will be an opportunity to lift up our graduates and send them forward towards their next stage of life. **Please let Tom Martin know who will be attending. Contact Tom at 342-9043 or email tom@calvaryrapidcity.org. All Seniors and their families are welcome.** This is a very busy time of year, but please set aside some time for this essential time of fellowship and ministry.



First Annual Bear Butte Conference Chili Cook Off.....

This chili cook off will be held on **Sunday, April 10th at South Dakota School of Mines and Technology in the Dorr Room, located in the Surbeck Center, the campus center.** Pastor Wilbur Holz from Trinity Lutheran in Rapid City and a member of the Campus Ministry Board has challenged the other pastors of Bear Butte to bring their best chili for taste testing. Those who attend will be able to vote for their favorite chili. Tickets to use in voting will cost \$5.00 for ten votes. Larger donations, of course, will be accepted. The tasting will begin at 12:30 pm. The votes will be tallied and a traveling trophy will be awarded. **Please join us and bring a friend!**

FACEBOOK....

Log on to www.Facebook.com and search for the "**Calvary Church**" page. Click the "**like**" button for the latest and greatest news, information and photos from Calvary.

WEBSITE....

www.calvaryrapidcity.org

Get current information about Calvary and listen to our weekly worship services.

Calvary Lutheran Church Staff

Lee Ann Henry...Office Manager

Myron Nelson...Business Manager

Visitation Ministry

Dan Senftner...Capital Campaign

Sonia Sykora...3 yr. olds - 5th Grade Coordinator

Stephanie Lehmann...6th - 9th Grade Coordinator

Tom Martin... 10th-12th Grade Coordinator

Volunteer Coordinator

Audio Visual/Web Coordinator

Kellie Meissner...Family Ministries Coordinator

Judy Frost...Program Office Support

Ilene Sharkey...Worship & Music Coordinator

Alleluia Choir Director/Organist

Kathy Stensgaard...Wednesday School Music

Leader, Hand Chime Choir

Director, Stories & More for

Preschoolers & Parents

Coordinator

Laurel French... Praise Singers Director

Congregational Care

Coordinator

Mary Minton...Praise Singers Accompanist

Ann Quam-Haakenson... Alleluia Choir

Accompanist

Bergie Osterloo...Wednesday School

Accompanist

Deb Martin...Wednesday Night Music Coordinator

Karen Schleusener...Wednesday Evening Meal

Coordinator

Christy Schulz...Nursery

LaRae Day...Nursery

James Jennings...Custodian

Herb Cleveland...Supply Pastor

Kirstin Kellaher...Associate Pastor

Dwight Stensgaard... Senior Pastor

Education Registration - 2011-12

Students currently registered with the Calvary Lutheran Education program will automatically be enrolled in their successive grade for the 2011-12 school year.

We are asking all parents to check in with the Education Office during the month of April to verify that information is current and correct.

If there are no corrections, we will assume the information is current and that your student wishes to be enrolled for next year in the same Wednesday School Session/class time, for their appropriate grade.



Look for the special tables in the Narthex Wednesdays, April 6 and 13

Wednesdays at Calvary...

Wednesday 5—5:45 5:30—6:15

School Session 1 Session 2

3 years—5th Grade

Sonia Sykora, Coordinator

Curriculum designed to activate faith, the mission project and learning continuum with music and library time.

Saints in Action 6:30—8

6th & 7th Grade

Stephanie Lehmann, Coordinator

Begin with worship followed by a number of rotations including large group teachings, small group discussions, drama, arts & crafts, videos and mission projects.

Confirmation 6:30—8

8th & 9th Grade

Stephanie Lehmann, Coordinator

Learning, service and fellowship are the three branches for the faith journey through Confirmation, with learning nights in a small group setting rotated with mission and fellowship nights.

CLC High School 7—8:15

10th - 12th Grade

Tom Martin, Coordinator

Grow as a Christian family through mission projects, fellowship events, meaningful discussions and many leadership opportunities.

...and on Sundays

(twice/month)

Stories & More 9:15 - 10 am

Small children and their parents

Kathy Stensgaard, Coordinator

"Godly Play" sessions, using sensorial objects to help make the story come alive, including activity centers, music, snack time and prayer. *Young children (and their parents) enrolled in Wednesday School are also welcome to join us on these special Sundays!*

...plus on Saturdays

C.B.I.C.K. 7:00

Middle School Youth Group

6th - 8th Grade

Pastor Kirstin Kellaher, Coordinator

Children Living Loving and Learning In Christ's Kingdom

Watch for the notices of events! Kids can come and get excited, inspired and ignited in their faith while building strong friendships.



Check in and volunteer today!

CALVARY EDUCATION UPDATE

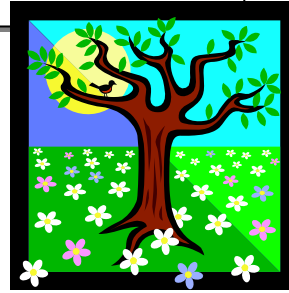
APRIL 2011

Sharing the Grace of God:

it's free
it's unconditional
it's undeserved
it's for always
it's for everyone

EDUCATION TEAM

| | | |
|-------------------|----------------------|---------------------------------------|
| Kathy Stensgaard | Family Sunday School | (all ages) |
| Sonia Sykora | Wednesday School | (3 yrs-5 th) |
| Stephanie Lehmann | Saints/Confirmation | (6 th - 9 th) |
| Tom Martin | High School Youth | (10 th -12 th) |
| Pastor Dwight | Church Office | 342-9043 |
| Pastor Kirstin | Church Office | 342-9043 |
| Judy Frost | Education Office | 342-9043 |



April 13

Final...

- Wednesday classes
- Dinner
- Worship

Education Survey Results

Thank you to the parents who have shared their input and ideas for our education program. Calvary's Education Staff strives to sustain the quality of our offerings and make it the best experience possible for teachers, parents and students. The following is a sampling of comments from the Education Surveys:

Q What do you value the most about the current Wednesday programs?

A *Family/kid oriented, meals, music*

Q What was one of the highlights of the year for your student/family?

A *Family Milestones, 5th Grade Communion, Christmas Program, Music, Goat Mission, Camp Night*

Q What were the stress points you came across this year?

A *Lack of discipline/respect of students, too many children in classroom, eating time*

Q What are some ways we can improve this program?

A *More parent volunteers in classroom, mandate all parents to volunteer at least once*

Registration for next year

Students currently registered with the Calvary Lutheran Education program will automatically be enrolled in their successive grade for the 2011-12 school year. We are asking all parents to check in with the Education Office, 342-9043 during the month of April to verify that information is current and correct. Staff and information will also be available on Wednesdays, April 6 and April 13.

If there are no corrections, we will assume the information is current and that your student wishes to be enrolled for next year in the same Wednesday School Session/class time, for their appropriate grade. Please see the additional information within the main April newsletter!



Children Singing!

Wednesday, April 13

6:30 pm worship

This is also the last class day, Wednesday Meal and Worship for the Education Year.

Stories and More



for preschoolers & parents

April 3 The Mystery of Easter
April 17 Easter Eggs

Our herd has grown to **11 goats!**

If you haven't brought in your goat offering box, please do so as soon as possible.

We would like to have all goat money collected and counted before the last class on April 13, so everyone can share in celebrating our goat herd!



THANK YOU to all 3rd trimester Wednesday School teachers:

Lynn Beasley, Tammy Buehner, Charles & Janice Conlee, Nicole Caroline, Bryon Christian, Shelby Duffield, Tina Eberle, Lauren Ellingson, Trisha Ellingson, Kristin Esser, Jennifer Gordon, Jess Gromer, Theresa Helfenstein, Jodi Hericks, Beth Hunt, Christie Ingalls, Ashley Jenner, Josie Kinzley, Dione Krush, Colleen McCollar, Cari Mortimer, Lisa Mueller, Danette Paschke, Kim Polzen, Brandon Richardt, Jodie Ruffedt, Rick Schleusener, Jessica Scull, Noah Storm, Jack Storm, Niki Studer, Cathy Thrash and Nicole Young.

Apologies to any names inadvertently missed. Volunteers are the heart of this program; your time and commitment are greatly valued and we could not continue our education mission without your help. **Our goal for next year is 100% parent participation; sign up and volunteer today!**

THANK YOU to all 3rd trimester SAINTS in ACTION teachers and mentors:

Herb Cleveland, Debbie Erickson, Leslie Greager, Kirk Guymon, Lori Guymon, Becky Kintigh, Tim Kretschmar, Colleen McCollar, Carol Novak, Kathy Staton, Cami Widvey.

Confirmation Update

| | |
|----------|--|
| April 6 | 8 th Grade: Mission Night 9 th Grade: Faith Projects |
| April 13 | 8 th Grade: Road Rally (LAST event for 8 th) 9 th Grade: Share Faith Statements |
| April 20 | HOLY WEEK – NO CLASSES |
| April 27 | 9 th Grade: Photos, confirmation rehearsal & dinner @ Calvary |
| May 1 | Confirmation Sunday at 10:15 am service |

THANK YOU to all the wonderful Confirmation Guides!

8th Grade: Leah Braun, Tracy Fine, Raelyn Herman, Linda Iverson, Audra Nesland, Jeff Schleusener
9th Grade: Ann Hast, Kari Kadrmass, Cindy Kinzley, Jane Mincks, Beth Palmer, Dan Palmer, Julie Poppe, Sally Samuelsen Wharton, Kay Stambaugh, Lori Storm

CLC HS Youth News

2010-11 was an incredible year for youth ministry at Calvary! This year offered a High School experience that has been rewarding for the students and for the adult volunteers.

2010-11 gave us a chance to learn, explore, share and participate. We have grown to know each other, as well as to know Christ better. We have matured in our relationships and grown stronger in our bonds to one another. We have truly discovered the Godly blessings of one another!

We've been involved in fun games (Club Nites), meaningful discussions (Go Deep Nites), and enjoyable social nights at the Alternative Fuel Coffeehouse, downtown. We asked the congregation to donate board games and we filled our closet with great favorites. We also worked hard to raise funds for the important High School Summer Mission Trip in 2011 to Las Vegas. Amazing things are happening in this group! **God is so good!**

Most importantly, thank you to our Lord Jesus Christ for His guidance and direction every minute of every day!

Tom Martin

2011 Lutherans Outdoors Summer Schedule

Grade listed is grade completed in Spring 2011

| NeSoDak | | Klein | Outlaw | AMR | | | | |
|----------------------|---------------------------------------|---|--------------------------|-------------------------------------|--|-----------------------------|----------------------------|---|
| | | | | Fort Courage | AMR Adventures | Black Hills Servant Camp | Pine Ridge Servant Camp | |
| June 12-17 | Confirmation Camp | Grades 7-10 | Grades 6-8 | Grades 7-10 | Grades 9-12 | Grades 9-12 | Pine Ridge (Gr. 9-12) | |
| | | | CIT (Week 1 of 3) | | | | | |
| | | | Peer Ministry (Gr. 9-12) | | | | | |
| June 19-24 | Confirmation Camp | Grades 7-10 | Grades 3-4 | Black Hills Riders (Gr. 7-10) | Grades 7-9 | Grades 9-12 | Pine Ridge (Gr. 9-12) | |
| | | | Grades 5-6 | | | | | |
| June 26- July 1 | Camp Gilbert (Diabetes Camp) | Servant Camp (Gr. 7-10) | Grades 3-4 / Grades 5-6 | Grades 6-8 | Grades 9-12 | Grades 9-12 | Pine Ridge (Gr. 9-12) | |
| | | CIT/WIT (Week 1 of 3) | 1-2-3 Camp (Sun-Mon) | | | | | Ladies' Backpack in Black Hills (Gr. 9 - Adult) |
| | | | 1-2-3 Camp (Tues-Wed) | | | | | |
| July 3-8 | Mini Camp (Gr. 3-6 / Tues-Fri) | Alumni Weekend (Sat-Tues) | Family Camp | Grades 7-10 | Elderhostel/Road Scholars Pioneer Week | Grades 9-12 | Closed | |
| | CIT (Week 1 of 3) | Home on the Range (Gr. 4-6 & adult / Tues-Fri) | | | | | | |
| July 10-15 | Grades 5-6 | Grades 6-8 | Family Camp | Grades 5-6 | Grades 9-12 | Grades 9-12 | Manderson (Gr. 9-12) | |
| | Water & Wheels (Gr. 7-9) | | | | | | | |
| | Servant Camp (Gr. 9-12) | | | | | | | |
| July 17-22 | 1-2-3 Camp (Sun-Mon) | Peer Ministry (Gr. 9-12) | Family Camp | Grades 7-10 | Grades 9-12 | Grades 9-12 | Manderson (Gr. 9-12) | |
| | Grades 3-4 | | | | | | | |
| | Grandparents & Grandkids (Wed-Fri) | | | | | | | |
| July 24-29 | Grades 7-8 | Grades 7-10 | Family Camp | Grades 5-6 | Grades 7-9 | Grades 9-12 | Manderson (Gr. 9-12) | |
| | Grades 5-6 | | | | | | | |
| | Mini Family Camp (Fri-Sun) | | | | | | | |
| July 31- August 5 | Grades 3-4 | Grades 6-8 | Family Camp | | Grades 9-12 | Grades 9-12 | Manderson (Gr. 9-12) | |
| | Grades 5-6 | | | | | | | |
| | Water & Wheels (Gr. 9-10) | | | | | | | |
| August 7-12 | Music Camp (Gr. 5-8) | | Family Camp (Sun-Wed) | | | | | |
| | Servant Camp (Gr. 7-9) | | | | | | | |

Register ONLINE
www.LOSD.org or call 800-888-1464
 Registration Opens:
 Monday, November 1, 2010!

April 2011

Monthly Planner

| Sunday | Monday | Tuesday | Wednesday | Thursday | Friday | Saturday | | | | | | | | | | | | | | | | | | | | | | | | | | | | | | | | | | | | | | | | | | | | | | | | | | | | | | | | | | | | | | | | | | | | | | | | | | | | | | | | | | | | | | | | | | | |
|--|--|--|---|---|---|--|--|--|---|---|---|---|---|---|---|---|---|---|---|----|----|----|----|----|----|----|----|----|----|----|----|----|----|----|----|----|----|----|----|----|----|--|--|--|----------|--|--|--|--|--|--|---|---|---|---|---|---|---|---|---|---|---|---|---|---|---|---|----|----|----|----|----|----|----|----|----|----|----|----|----|----|----|----|----|----|----|----|----|----|--|--|--|--|--|--|-------------------------------|------------------------------|
| | <table border="1"> <tr><th colspan="7">Mar 2011</th></tr> <tr><th>S</th><th>M</th><th>T</th><th>W</th><th>T</th><th>F</th><th>S</th></tr> <tr><td>6</td><td>7</td><td>8</td><td>9</td><td>10</td><td>11</td><td>12</td></tr> <tr><td>13</td><td>14</td><td>15</td><td>16</td><td>17</td><td>18</td><td>19</td></tr> <tr><td>20</td><td>21</td><td>22</td><td>23</td><td>24</td><td>25</td><td>26</td></tr> <tr><td>27</td><td>28</td><td>29</td><td>30</td><td>31</td><td></td><td></td></tr> </table> | Mar 2011 | | | | | | | S | M | T | W | T | F | S | 6 | 7 | 8 | 9 | 10 | 11 | 12 | 13 | 14 | 15 | 16 | 17 | 18 | 19 | 20 | 21 | 22 | 23 | 24 | 25 | 26 | 27 | 28 | 29 | 30 | 31 | | | <table border="1"> <tr><th colspan="7">Mar 2011</th></tr> <tr><th>S</th><th>M</th><th>T</th><th>W</th><th>T</th><th>F</th><th>S</th></tr> <tr><td>1</td><td>2</td><td>3</td><td>4</td><td>5</td><td>6</td><td>7</td></tr> <tr><td>8</td><td>9</td><td>10</td><td>11</td><td>12</td><td>13</td><td>14</td></tr> <tr><td>15</td><td>16</td><td>17</td><td>18</td><td>19</td><td>20</td><td>21</td></tr> <tr><td>22</td><td>23</td><td>24</td><td>25</td><td>26</td><td>27</td><td>28</td></tr> <tr><td>29</td><td>30</td><td>31</td><td></td><td></td><td></td><td></td></tr> </table> | Mar 2011 | | | | | | | S | M | T | W | T | F | S | 1 | 2 | 3 | 4 | 5 | 6 | 7 | 8 | 9 | 10 | 11 | 12 | 13 | 14 | 15 | 16 | 17 | 18 | 19 | 20 | 21 | 22 | 23 | 24 | 25 | 26 | 27 | 28 | 29 | 30 | 31 | | | | | | | <p>1 April Fool's Day</p> | <p>2 5:30 PM Worship</p> |
| Mar 2011 | | | | | | | | | | | | | | | | | | | | | | | | | | | | | | | | | | | | | | | | | | | | | | | | | | | | | | | | | | | | | | | | | | | | | | | | | | | | | | | | | | | | | | | | | | | | | | | | | |
| S | M | T | W | T | F | S | | | | | | | | | | | | | | | | | | | | | | | | | | | | | | | | | | | | | | | | | | | | | | | | | | | | | | | | | | | | | | | | | | | | | | | | | | | | | | | | | | | | | | | | | | | |
| 6 | 7 | 8 | 9 | 10 | 11 | 12 | | | | | | | | | | | | | | | | | | | | | | | | | | | | | | | | | | | | | | | | | | | | | | | | | | | | | | | | | | | | | | | | | | | | | | | | | | | | | | | | | | | | | | | | | | | |
| 13 | 14 | 15 | 16 | 17 | 18 | 19 | | | | | | | | | | | | | | | | | | | | | | | | | | | | | | | | | | | | | | | | | | | | | | | | | | | | | | | | | | | | | | | | | | | | | | | | | | | | | | | | | | | | | | | | | | | |
| 20 | 21 | 22 | 23 | 24 | 25 | 26 | | | | | | | | | | | | | | | | | | | | | | | | | | | | | | | | | | | | | | | | | | | | | | | | | | | | | | | | | | | | | | | | | | | | | | | | | | | | | | | | | | | | | | | | | | | |
| 27 | 28 | 29 | 30 | 31 | | | | | | | | | | | | | | | | | | | | | | | | | | | | | | | | | | | | | | | | | | | | | | | | | | | | | | | | | | | | | | | | | | | | | | | | | | | | | | | | | | | | | | | | | | | | | |
| Mar 2011 | | | | | | | | | | | | | | | | | | | | | | | | | | | | | | | | | | | | | | | | | | | | | | | | | | | | | | | | | | | | | | | | | | | | | | | | | | | | | | | | | | | | | | | | | | | | | | | | | |
| S | M | T | W | T | F | S | | | | | | | | | | | | | | | | | | | | | | | | | | | | | | | | | | | | | | | | | | | | | | | | | | | | | | | | | | | | | | | | | | | | | | | | | | | | | | | | | | | | | | | | | | | |
| 1 | 2 | 3 | 4 | 5 | 6 | 7 | | | | | | | | | | | | | | | | | | | | | | | | | | | | | | | | | | | | | | | | | | | | | | | | | | | | | | | | | | | | | | | | | | | | | | | | | | | | | | | | | | | | | | | | | | | |
| 8 | 9 | 10 | 11 | 12 | 13 | 14 | | | | | | | | | | | | | | | | | | | | | | | | | | | | | | | | | | | | | | | | | | | | | | | | | | | | | | | | | | | | | | | | | | | | | | | | | | | | | | | | | | | | | | | | | | | |
| 15 | 16 | 17 | 18 | 19 | 20 | 21 | | | | | | | | | | | | | | | | | | | | | | | | | | | | | | | | | | | | | | | | | | | | | | | | | | | | | | | | | | | | | | | | | | | | | | | | | | | | | | | | | | | | | | | | | | | |
| 22 | 23 | 24 | 25 | 26 | 27 | 28 | | | | | | | | | | | | | | | | | | | | | | | | | | | | | | | | | | | | | | | | | | | | | | | | | | | | | | | | | | | | | | | | | | | | | | | | | | | | | | | | | | | | | | | | | | | |
| 29 | 30 | 31 | | | | | | | | | | | | | | | | | | | | | | | | | | | | | | | | | | | | | | | | | | | | | | | | | | | | | | | | | | | | | | | | | | | | | | | | | | | | | | | | | | | | | | | | | | | | | | | |
| <p>3 8:15 AM Worship 9:15 AM Sunday School 9:20 AM Adult Forum 10:15 AM Worship</p> | <p>4 5:30 PM Social Concerns 6:30 PM CLICK 7:00 PM Handchimes</p> | <p>5 6:30 PM Praise Singers 7:00 PM Altar Guild</p> | <p>6 11:00 AM Women's Fellowship 4:45 PM Dinner 5:00 Wed School 6:30 PM 6-12 Grade 6:30 PM Worship 6:50 PM Alleluia Choir 8:00 PM Men's Choir</p> | <p>7 9:00 AM Quilters</p> | <p>8 11:30 AM Keenagers</p> | <p>9 5:30 PM Crossroads Worship 6:30 PM Pot Luck</p> | | | | | | | | | | | | | | | | | | | | | | | | | | | | | | | | | | | | | | | | | | | | | | | | | | | | | | | | | | | | | | | | | | | | | | | | | | | | | | | | | | | | | | | | | | | |
| <p>10 8:15 AM Worship 9:20 AM Adult Forum 10:15 AM Worship</p> | <p>11 6:30 PM CLICK 7:00 PM Handchimes</p> | <p>12 6:00 PM New Members 6:30 PM Praise Singers</p> | <p>13 9:30 AM Phoebe C 1:00 Bible Study 4:45 PM Dinner 5:00 Wed School 6:30 PM 6-12 Grade 6:30 PM Worship 6:50 PM Alleluia Choir</p> | <p>14 7:00 AM Mens Bks 9:00 AM Quilters 7:00 PM Council</p> | <p>15 5:45 PM Mission Meal</p> | <p>16 1:00 PM Womens Tea 5:30 PM Worship</p> | | | | | | | | | | | | | | | | | | | | | | | | | | | | | | | | | | | | | | | | | | | | | | | | | | | | | | | | | | | | | | | | | | | | | | | | | | | | | | | | | | | | | | | | | | | |
| <p>17 8:15 AM Worship 9:15 AM Sunday School 9:20 AM Adult Forum 10:15 AM Worship</p> | <p>18 6:30 PM CLICK 7:00 PM Handchimes</p> | <p>19 6:30 PM Faith Alive 6:30 PM Praise Singers</p> | <p>20 9:30 AM Naomi C 6:50 PM Alleluia Choir 8:00 PM Men's Choir</p> | <p>21 9:00 AM Quilters 12:00 PM Maundy Thursday 7:00 PM Maundy Thursday</p> | <p>22 12:00 PM Ecumenical Good Friday 7:00 PM Good Friday</p> | <p>23 5:30 PM Worship</p> | | | | | | | | | | | | | | | | | | | | | | | | | | | | | | | | | | | | | | | | | | | | | | | | | | | | | | | | | | | | | | | | | | | | | | | | | | | | | | | | | | | | | | | | | | | |
| <p>24 7:00 AM Worship 8:15 AM Worship 10:15 AM Worship</p> | <p>25 7:00 PM Handchimes</p> | <p>26 6:30 PM Praise Singers</p> | <p>27 6:50 PM Alleluia Choir 8:00 PM Men's Choir</p> | <p>28 9:00 AM Quilters</p> | <p>29 5:30 PM Worship</p> | | | | | | | | | | | | | | | | | | | | | | | | | | | | | | | | | | | | | | | | | | | | | | | | | | | | | | | | | | | | | | | | | | | | | | | | | | | | | | | | | | | | | | | | | | | | |